

MICRO SWITCH

A DIVISION OF MINNEAPOLIS-HONEYWELL REGULATOR COMPANY
MINNEAPOLIS, MINNESOTA

FED: MFR. CODE 91929

SWITCH - BASIC

BA-2RV22-A2
ISSUE 2

REPLACES
M BA-2RV22-A2
PAGE 1 OF 1

RELEASE NO.

DRAWING NUMBER

ISSUE

9

CHECK

RELEASE NO.

CHECK

REVISIONS

A	CO-15863	6 CH	19 DEC 81
B	CO-70184-8	8 JW	8 MAR 92
C	CO-72397	JJO	30 APR 92
D	CO-73287-J	JAL	22 NOV 93
E	CO-75204B	JWB	1 FEB 94
F	CO-77590	SAD	8 JUN 94
G	CO93346	DLT	26 AUG 98

CHECK

RELEASE NO.

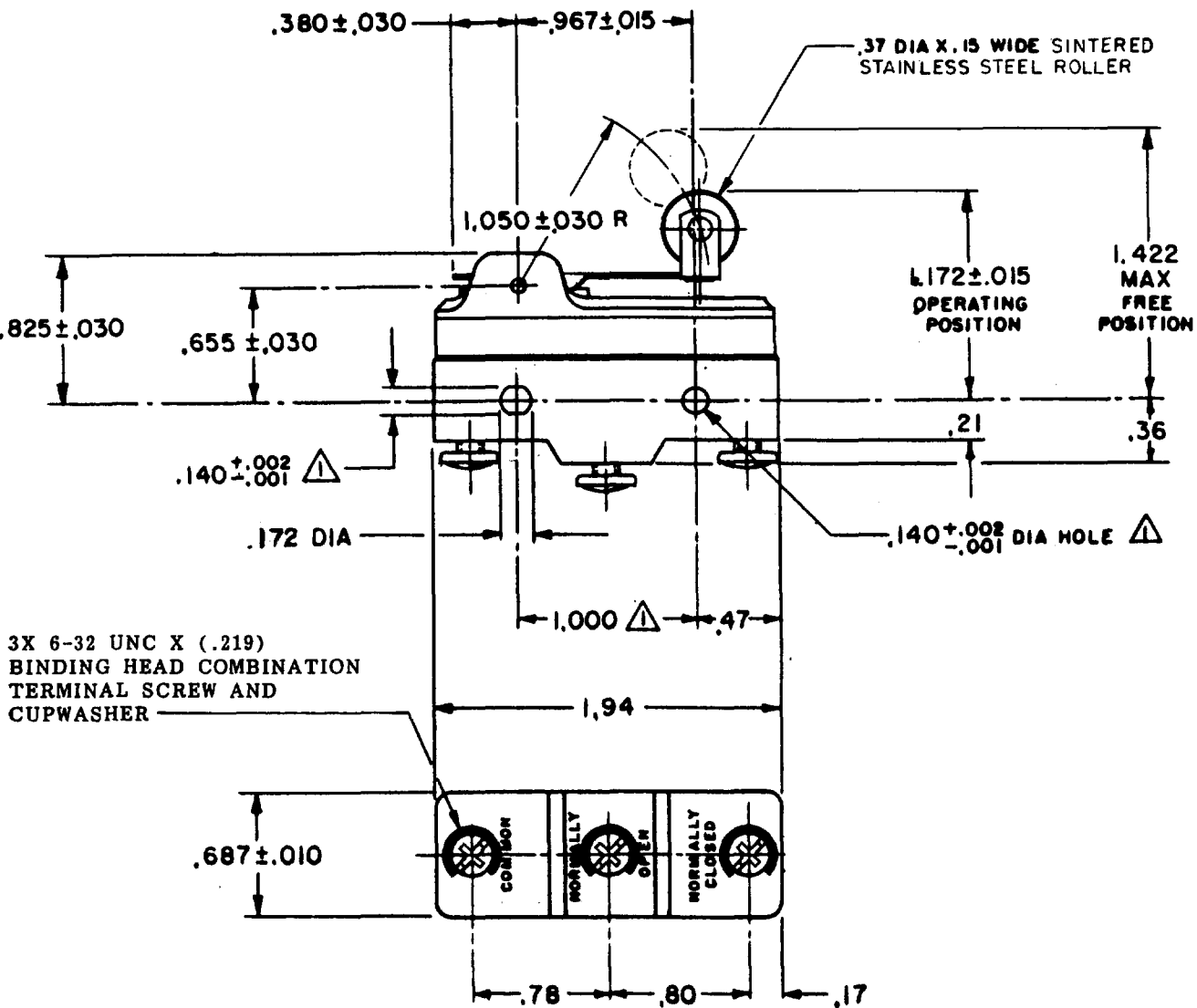
CHECK

CHECK

CHECK

CHECK

CHECK



NOTE
 ▲ - MOUNTING HOLES WILL ACCEPT PINS OR SCREWS OF .139 MAX DIA ON 1.000 ± .002 CENTERS

THIS DRAWING COVERS A PROPRIETARY ITEM AND IS THE PROPERTY OF MICRO SWITCH, A DIVISION OF MINNEAPOLIS-HONEYWELL REGULATOR CO. THIS DRAWING IS NOT TO BE COPIED OR USED WITHOUT THE APPROVAL OF MICRO SWITCH.

CHARACTERISTICS	ELECTRICAL DATA		SCALE ---- FULL
OPERATING FORCE ----- 6 OZ MAX	CONTACT ARRANGEMENT SPDT	BREAK DISTANCE .020 MIN	DO NOT SCALE PRINT
RELEASE FORCE ----- 1 1/2 OZ MIN	L23	UNDERWRITERS' LAB. INC. LISTED RATING 20A - 125, 250 OR 480 VAC 10A - 125 VAC "L" 1HP - 125 VAC, 2HP - 250 VAC 1/2A - 125 VDC, 1/4A - 250 VDC CE D SA 20(3)A 250V ~ T85 5E4	UNLESS OTHERWISE SPECIFIED DIMENSIONS ARE IN INCHES TOLERANCES ARE: ONE PLACE (.0) ±.030 TWO PLACE (.00) ±.015 THREE PLACE (.000) ±.008 ANGLES ±
PRETRAVEL ----- .250 MAX	L288		
DIFFERENTIAL TRAVEL ----- .045 MAX	L299		
OVERTRAVEL ----- .030 MIN	L308		
			WEIGHT

FORMTEK
3-50376

DRAWN
G C H 15 DEC 81

CHECK
DAW 11 JAN 82